

TECHNICAL DATA SHEET

RADIAL FAN nr. AFGG-40_19



G&G filtration CZ, s.r.o.

A Hrubínova 1903/9, 66451 Šlapanice, CZ
 IČ 05226953 IČ DPH CZ05226953
 E info@ggf.cz W www.ggf.cz

ITEM1

Document printed by Aeraulica - Dimensions and performances can be changed without prior notice

Type and characteristics of the requested machine				performance on				Outlet	
Flow rate	22000 [m3/h]	Capacity (Normal)		20499 [Nm3/h]					
Total pressure	4000 [Pa]	Static pressure							
Working fluid temperature	20 [°C]	Fluid specific weight		1.204 [Kg/m3]					
Installation altitude	0 asl [m]	Specific weight std (20 [°C], 0 asl [m])		1.204 [Kg/m3]					
Suggested model and effective characteristics				performance on				Outlet	
Model	GR 1000/4-I	Execution	E04	Installation Type	A (free inlet and outlet)				
Fluid specific weight	1.204	1.204 [Kg/m3]		Revolution fan speed				1480 [rpm]	
Total pressure	3701	3701 [Pa]		Orientation				RD 0	
Static pressure	3432	3432 [Pa]		Sound power LwA				110.63 [dB(A)]	
Flow rate	22000	22000 [m3/h]		Sound pressure at mt.1.5 1/2 sf in open field				97.33 [dB(A)]	
Capacity (Normal)	20499	20499 [Nm3/h]		Pipings	s>3mm = +3dB; 1mm<s<3mm = +4,5dB; s<1mm = +6dB				
Power dem. at shaft	27.14	27.14 [kW]		Fan efficiency	Outlet			83.34 %	
Motor power demand	27.14	27.14 [kW]							
Characteristics of chosen motor				Motor efficiency IEC 60034-30			IE3	PD ² impeller	52.0 kgm ²
Code	225S04-50/std3P	shape	B3	Efficiency	93.9	94.5	94.4	PD ² needed	52.14 kgm ²
Rated power	37.0 [kW]	n° poles	4	rpm	1478			PD ² motor	162 kgm ²
ErP 2009/125/CE Regulament (UE) N. 327/2011				Notes					
Efficiency grade	64		N	77.6	Total efficiency			78.73	%
Impeller type	backward blades	Type of test	B/total	Flow rate	22514.4 [m3/h]	Pressure		3378	[Pa]
NOTE				Performance on Outlet GR 1000/4-I - E04 - D=1[m] - ρ=1.204[kg/m ³] - T=20[°C] - 0[m]a.s.l.					
Rpm Limit	<=60 °C: 1900 Rpm								
values of the noise of fan obtained in ambient not reverberant with inlet and outlet ducts fully insulated									

TECHNICAL DATA SHEET

RADIAL FAN nr. AFGG-40_19



G&G filtration CZ, s.r.o.

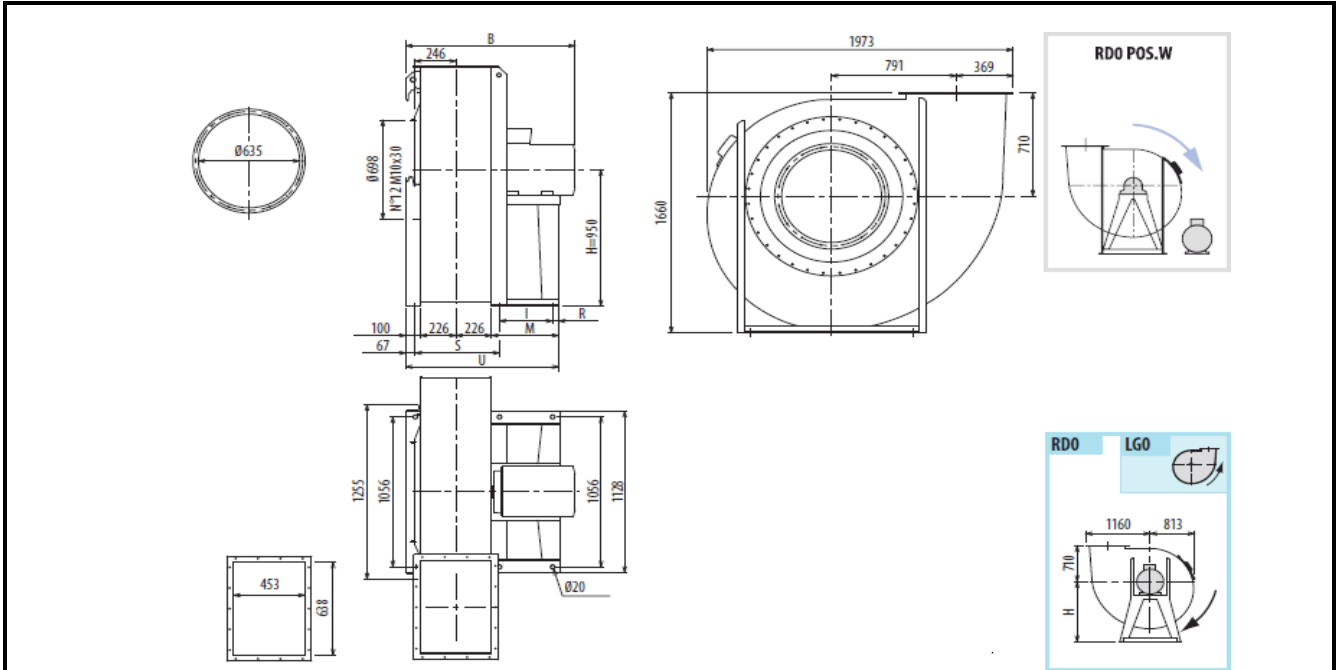
A Hrubínova 1903/9, 66451 Šlapanice, CZ

IČ 05226953 IČ DPH CZ05226953

E info@ggf.cz W www.ggf.cz

ITEM1

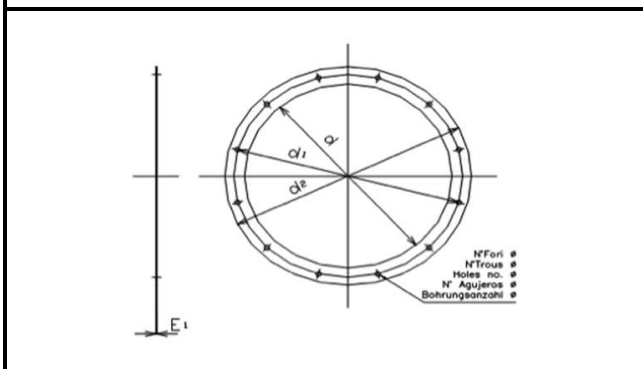
Document printed by Aeraulica - Dimensions and performances can be changed without prior notice



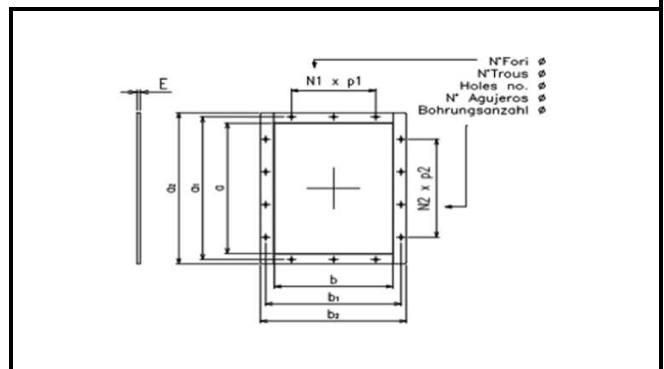
Indicative measures in the standard configuration. For detailed information contact your reference.

Indicative value of weight including standard motor.

B	I	H	H1	H2	M	R	S	U	PD2	kg
1252	440	950	710	1180	540	45	541	1093	52	893



Cod	dxn°	d1	d2	Φ	E1
0635 A	635x12	698	735	14	5



Cod	axb	a1	b1	a2	b2
0638x0453	638x453	698	513	738	553

N1xp	N2xp	n°	Φ	E
2x160	3x160	14	14	4