

# TECHNICAL DATA SHEET

## RADIAL FAN nr. AFGG-25\_09



G&G filtration CZ, s.r.o.

A Hrubínova 1903/9, 66451 Šlapanice, CZ  
 IČ 05226953 IČ DPH CZ05226953  
 E [info@ggf.cz](mailto:info@ggf.cz) W [www.ggf.cz](http://www.ggf.cz)

**ITEM1**

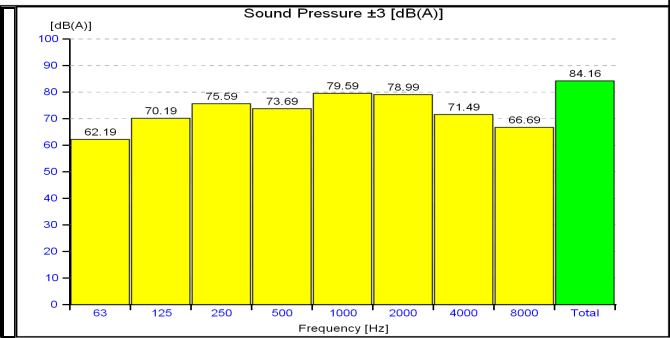
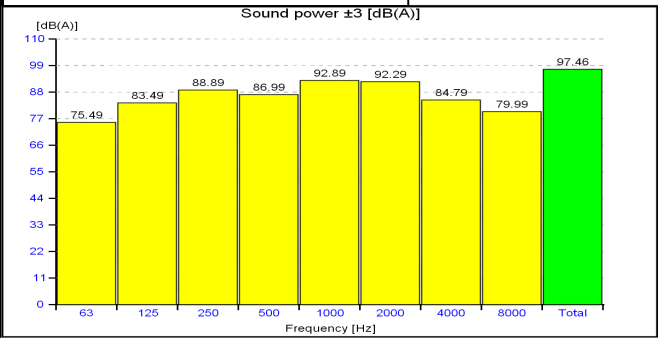
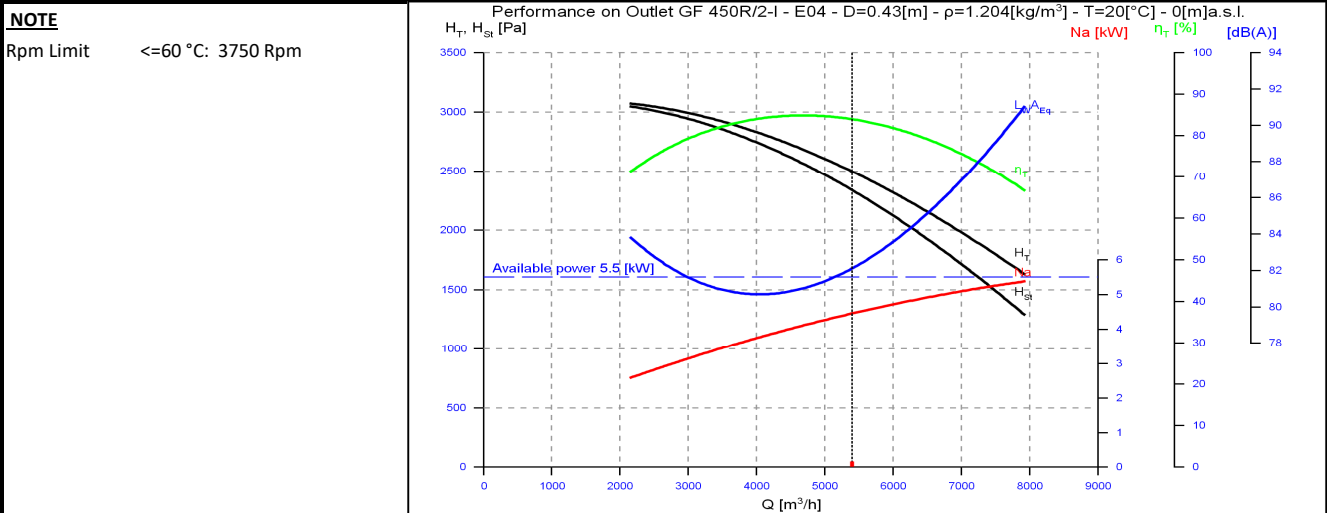
Document printed by Aeraulica - Dimensions and performances can be changed without prior notice

Type and characteristics of the requested machine		performance on		Outlet
Flow rate	5400 [m3/h]	Capacity (Normal)		5032 [Nm3/h]
Total pressure	2500 [Pa]	Static pressure		
Working fluid temperature	20 [°C]	Fluid specific weight		1.204 [Kg/m3]
Installation altitude	0 asl [m]	Specific weight std (20 [°C], 0 asl [m])		1.204 [Kg/m3]

Suggested model and effective characteristics				performance on		Outlet
Model	GF 450R/2-I	Execution	E04	Installation Type	A (free inlet and outlet)	
Fluid specific weight	1.204	1.204 [Kg/m3]		Revolution fan speed		2940 [rpm]
Total pressure	2494	2494 [Pa]		Orientation		RD 0
Static pressure	2335	2335 [Pa]		Sound power LwA		97.46 [dB(A)]
Flow rate	5400	5400 [m3/h]		Sound pressure at mt.1.5 1/2 sf in open field		84.16 [dB(A)]
Capacity (Normal)	5032	5032 [Nm3/h]		Pipings	s>3mm = +3dB; 1mm<s<3mm = +4,5dB; s<1mm = +6dB	
Power dem. at shaft	4.456	4.456 [kW]		Fan efficiency	Outlet	83.95 %
Motor power demand	4.456	4.456 [kW]				

Characteristics of chosen motor				Motor efficiency IEC 60034-30			IE3	PD <sup>2</sup> impeller	0.1	kgm <sup>2</sup>		
Code	132SA2-50/std3	shape	B3	Efficiency	89.2	90	89.7	PD <sup>2</sup> needed	0.1	kgm <sup>2</sup>		
Rated power	5.5 [kW]	n° poles	2	rpm	2950	Load	100%	75%	50%	PD <sup>2</sup> motor	6.9	kgm <sup>2</sup>

ErP 2009/125/CE Regulament (UE) N. 327/2011				Notes				
Efficiency grade	64			N	79.9	Total efficiency	76.34	%
Impeller type	backward blades	Type of test	B/total	Flow rate	4694.4 [m3/h]	Pressure	2558 [Pa]	



values of the noise of fan obtained in ambient not reverberant with inlet and outlet ducts fully insulated

# TECHNICAL DATA SHEET

## RADIAL FAN nr. AFGG-25\_09



G&G filtration CZ, s.r.o.

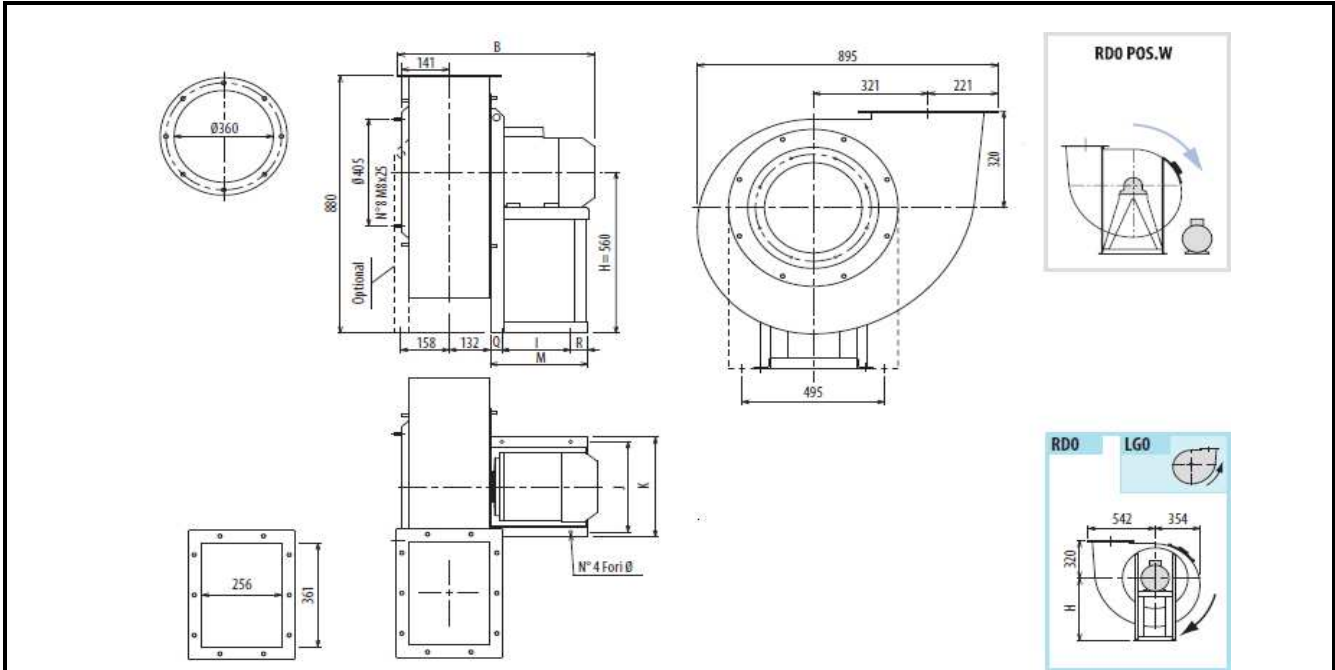
A Hrubínova 1903/9, 66451 Šlapanice, CZ

IČ 05226953 IČ DPH CZ05226953

E [info@ggf.cz](mailto:info@ggf.cz) W [www.ggf.cz](http://www.ggf.cz)

### ITEM1

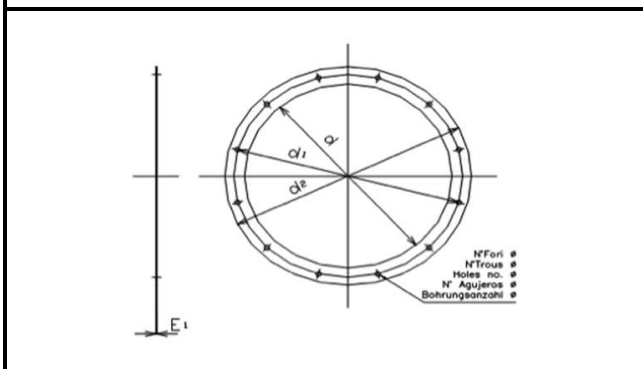
Document printed by Aeraulica - Dimensions and performances can be changed without prior notice



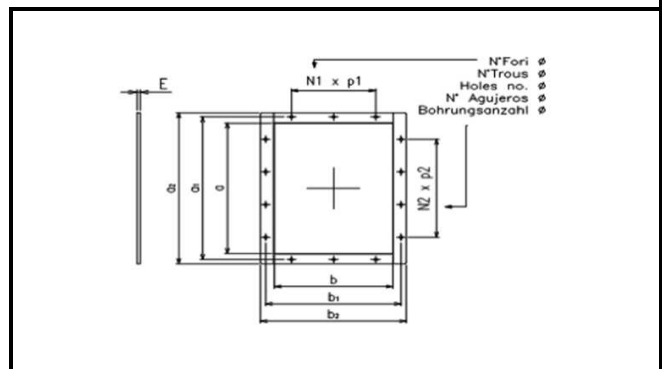
Indicative measures in the standard configuration. For detailed information contact your reference.

Indicative value of weight including standard motor.

B	I	H	H1	H2	J	K	M	Q	R	Φ	PD2	kg
673	237	560	320	560	337	372	345	44	64	12	1,2	106



Cod	dxn°	d1	d2	Φ	E1
0360 A	360x8	405	440	12	4



Cod	axb	a1	b1	a2	b2
0361x0256	361x256	405	300	441	336

N1xp	N2xp	n°	Φ	E
1x125	2x125	10	12	4